

Vidilanz Xtern-Cam® - Solar Powered Outdoor Wireless Surveillance Camera

May 2014

Xtern-Cam® is a rugged outdoor standalone surveillance camera with inbuilt 3G modem, digital image recording function, integrated night vision and inbuilt Solar Panel to give extraordinary long battery life.

It is part of the Vidilanz® *Solar Smart®* range of surveillance cameras and is a bundled product consisting of a Vidilanz® wireless surveillance camera, re-chargeable battery, remote control, 8GB memory card, battery charger and PC configuration software.

The camera captures high-resolution black & white images when motion is detected and emails a selection of these to a monitoring station or mobile phone as well as storing all the high resolution images to a removable memory card for easy viewing later, on a computer or Tablet. The camera can also be powered by an external 12VDC power source and can be externally triggered from a gate or door opening.

The camera can run in time-lapse or motion activated mode and operates outdoors, typically for 1 – 2 months capturing 100 images per day. The battery life can be extended further if the camera's solar panel can be positioned to maximise the sun's energy.

The camera can store up to 260,000 VGA images (8GB SD) and will optionally overwrite the oldest images when the memory card is full to enable **'set and forget'** operation.

Xtern-Cam® is also available with a colour camera for daytime operation with optional **16mm or 8mm telephoto lenses**.

For more information on the full range of the Vidilanz® surveillance cameras, please visit our website at www.vidilanz.eu

FEATURES

- Unique *Solar Smart®* “standalone” outdoor wireless (3G) surveillance camera
- Operates for months* using its Solar assisted battery
- Inbuilt invisible IR Flash for true covert night vision
- Motion activated or time lapse mode
- Compact, lightweight and portable with “Set & Forget” operation
- Rugged UV resistant weatherproof case (IP65) for harsh outdoor environments
- Customised image-capture sequence and image encryption
- Time and date stamped images with programmable text overlay
- Flexible scheduler for independent arming and disarming of camera
- Digital signature including camera ID, within each image for integrity verification
- Optional Colour camera available for daytime operation
- Optional 16mm or 8 mm Telephoto lens
- 3G Modem
- Ideal for monitoring rubbish dumping, Graffiti, livestock, construction, & holiday homes etc.

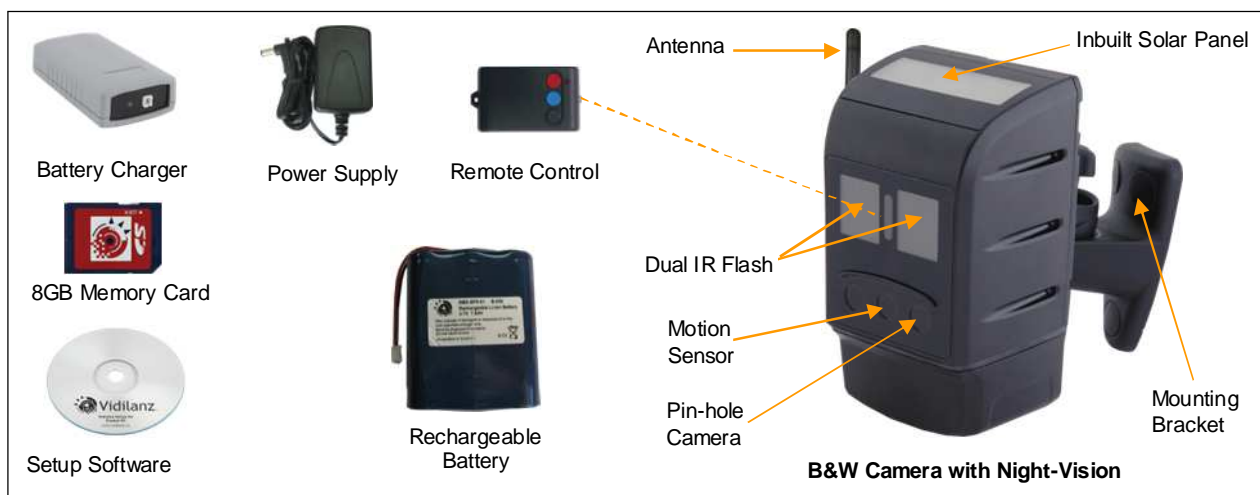


Entrance Gates



Construction Sites

CAMERA & ACCESSORIES



* Note – The solar panel (and camera) must be facing South (Northern Hemisphere) at the correct angle to receive maximum energy to recharge the battery!

CAMERAS

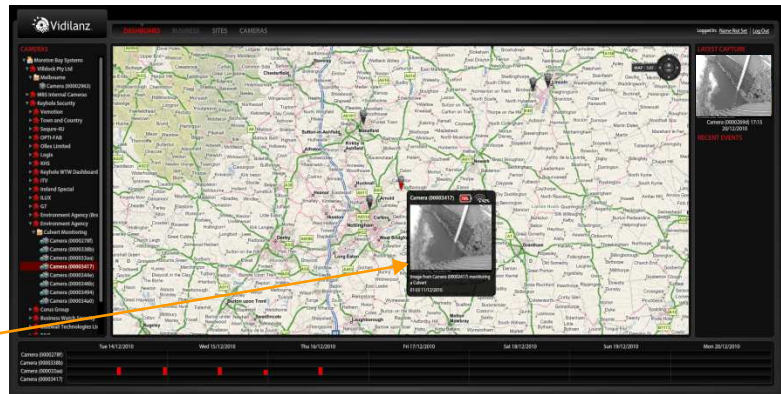
MBS-SA03-01(XRSM)

WIRELESS TO WEB™ DASHBOARD

The 'Wireless To Web' (WTW) proprietary network is a fast, secure and reliable means of sending images from wireless cameras to the end user's PC, mobile phone, monitoring station, or Dashboard.

The WTW Dashboard enables images to be displayed in real time from multiple cameras on a reference map.

The icons can be moved by the user and positioned exactly where the camera is located. When the mouse is moved over the icon, a viewing box drops down to display the latest real time image.

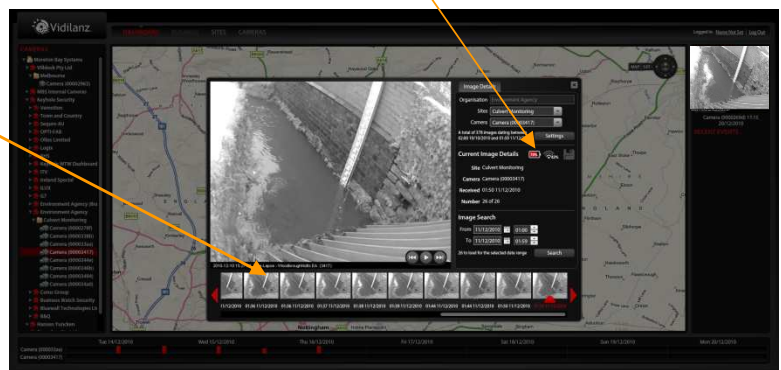


Battery level & Signal strength

Each camera is displayed as an icon and can be highlighted using the mouse and when selected, opens an image viewer to display real time or historical images in rapid succession.

Historical images can be searched for by time and date and displayed in the viewer.

The camera battery voltage and modem signal strength is displayed each time an image is received. The modem also sends a 'battery-low' warning email to the user when the battery needs re-charging.



SPECIFICATIONS:

CAMERA

MODEM

Image Type	Black & White or Colour, JPEG compressed VGA (640x480pixels), QVGA (320x240)	Cellular Bearer	GSM + GPRS Class 10
Camera Lenses	Wide angle: 3.3mm, AOV: 73°(D) x 61°(H) x 47°(V) Telephoto: 16mm, AOV: 17°(D) 8mm, 40°(D)	Approvals	R&TTE, CE, GCF, FCC, PTCRB China RTE, AT&T
Image Sensor Sensitivity	Colour: 3.8 V/Lux-sec, B&W: 4.9 V/Lux-sec	Radio Bands (2G)	Quad band 850/900/1800/1900
Motion Sensor (PIR)	Range: 0-5 m (16')(Typical), 0-7.5 m (25') (Maximum) FOV: 38° horizontal, 22° vertical	Radio Bands (3G)	Quad band 850/1900/2100
Inbuilt Flash options	Type: Invisible IR LED Range: 0 - 3m (9.8') Type: Covert IR LED Range: 0 - 5 m (16.4')	Power Consumption	Sleep: 17uA , Idle: 1.7 mA, GPRS (33dBm): 300mA
Inbuilt Solar Panel	Power output = 0.17W (Full sunlight)	Dimensions	65 x 45 x 15 mm (2.6" x 1.8" x 0.6")
Memory Card	SD™ Card, FAT16 & FAT 32 file format	Weight	20g (12oz)
SD Card Capacity (B&W)	8GB: 260,000 images	Operating Temperature	-20°C to +55°C (-4° F to 131° F)
External Power Supply	5 VDC, 300mA 9VDC to 24V DC, 300 mA (with optional interface board)	Nominal Sensitivity	850/900 MHz Rx: 104dBm 1800/1900 MHz Rx: 102 dBm
Internal Battery Capacity	Very high Capacity (VHCB) – Lithium Ion, 3.7V 7.5Ah		
Power Consumption	Standby: 1.9 mA , Running: 100 mA, with IR: 900 mA		
Case Dimensions & Rating	84 x 144 x 72 mm (3.3" x 5.7" x 2.8"), IP 65		
Weight	350g (12oz) – Including battery		
Operating Temperature	-20°C to +60°C (-4° F to 140° F)		
PC Software Requirements	Windows 2000 (SP4), Windows XP (SP2), Windows 7		

www.vidilanz.eu

information in this document is subject to change without notice